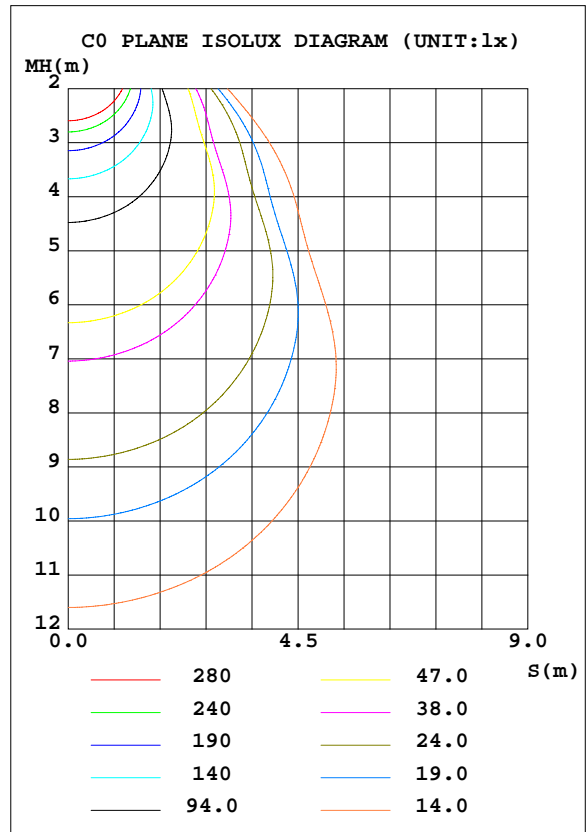
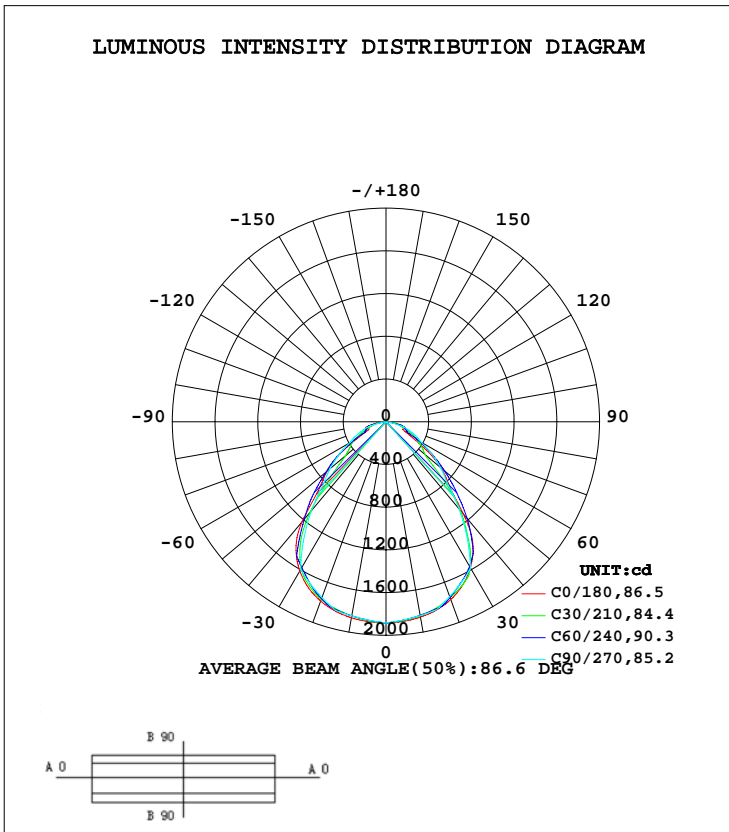


LUMINAIRE PHOTOMETRIC TEST REPORT

Test:U:230.52V I:0.1337A P:30.115W PF:0.9768 Freq:49.99Hz Lamp Flux:3865.15x1 lm		
NAME IL-P595K4NU(S)	TYPE:	WEIGHT:
SPEC.:	DIM.:	SERIAL No.:
MFR.: EVERFINE	SUR.:550*550	Shielding Angle:

DATA OF LAMP		PHOTOMETRIC DATA Eff: 128.35 lm/W			
MODEL	IL-P595K4NU(S)	Imax(cd)	1884	S/MH(C0/180)	1.25
NOMINAL POWER(W)	32	LOR(%)	100.0	S/MH(C90/270)	1.20
RATED VOLTAGE(V)	230	TOTAL FLUX(lm)	3865.1	η UP, DN(C0-180)	0.0,49.8
NOMINAL FLUX(lm)	3865.15	CIE CLASS	DIRECT	η UP, DN(C180-360)	0.0,50.2
LAMPS INSIDE	1	η up(%)	0.0	CIBSE SHR NOM	1.25
TEST VOLTAGE(V)	230	η down(%)	100.0	CIBSE SHR MAX	1.30



H(β) Range:-90 - 90DEG
 H(β) Interval: 1.0DEG
 Test Speed: HIGH
 Temperature:25.3DEG
 Operators:DAMIN
 Test Date:2020-04-28

V(B) Range:-75 - 75DEG
 V(B) Interval: 5.0DEG
 Test System:EVERFINE GO-2000B_V1 SYSTEM V2.0.404.7
 Humidity:65.0%
 Test Distance:8.240m [K=1.0000]
 Remarks: IL-P595K4NU(S)

ZONAL FLUX DIAGRAM

ZONAL FLUX DIAGRAM:

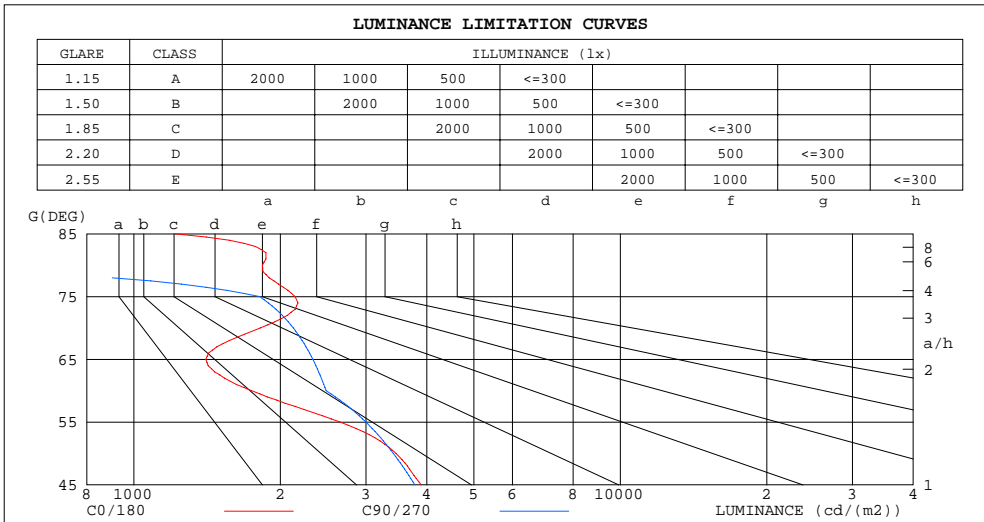
γ	C0	C45	C90	C135	C180	C225	C270	C315	γ	Φ zone	Φ total	Φ lum,lamp
10	1857	1841	1843	1842	1863	1845	1846	1845	0- 10	177.6	177.6	4.6,4.6
20	1772	1772	1743	1770	1788	1776	1752	1778	10- 20	512.5	690.1	17.9,17.9
30	1580	1550	1584	1556	1614	1568	1600	1556	20- 30	773.0	1463	37.9,37.9
40	1129	1136	1067	1179	1222	1208	1086	1142	30- 40	860.5	2324	60.1,60.1
50	672.7	629.9	664.0	680.2	726.0	684.2	682.9	652.9	40- 50	660.7	2984	77.2,77.2
60	263.9	360.6	375.8	380.8	304.6	383.4	391.5	375.5	50- 60	443.7	3428	88.7,88.7
70	188.2	208.6	220.0	217.2	183.9	214.0	228.4	211.6	60- 70	264.8	3693	95.5,95.5
80	96.52	81.31	0	80.71	106.5	82.62	0	76.19	70- 80	153.5	3846	99.5,99.5
90	1.470	0	0	0	2.083	0	0	0	80- 90	18.68	3865	100,100
100									90-100			
110									100-110			
120									110-120			
130									120-130			
140									130-140			
150									140-150			
160									150-160			
170									160-170			
180									170-180			
DEG	LUMINOUS INTENSITY:cd									UNIT:lm		

H(β) Range:-90 - 90DEG
H(β) Interval: 1.0DEG
Test Speed: HIGH
Temperature:25.3DEG
Operators:DAMIN
Test Date:2020-04-28

V(B) Range:-75 - 75DEG
V(B) Interval: 5.0DEG
Test System:EVERFINE GO-2000B_V1 SYSTEM V2.0.404.7
Humidity:65.0%
Test Distance:8.240m [K=1.0000]
Remarks: IL-P595K4NU(S)

LUMINANCE LIMITATION CURVES

Test:U:230.52V I:0.1337A P:30.115W PF:0.9768 Freq:49.99Hz Lamp Flux:3865.15x1 lm		
NAME: IL-P595K4NU(S)	TYPE:	WEIGHT:
SPEC.:	DIM.:	SERIAL No.:
MFR.: EVERFINE	SUR.:550*550	Shielding Angle:



LUMINANCE cd/(m2)		
G(DEG)	C0/180	C90/270
85	1213	0
80	1837	0
75	2145	1813
70	1819	2126
65	1406	2333
60	1745	2485
55	2653	3000
50	3460	3415
45	3897	3780

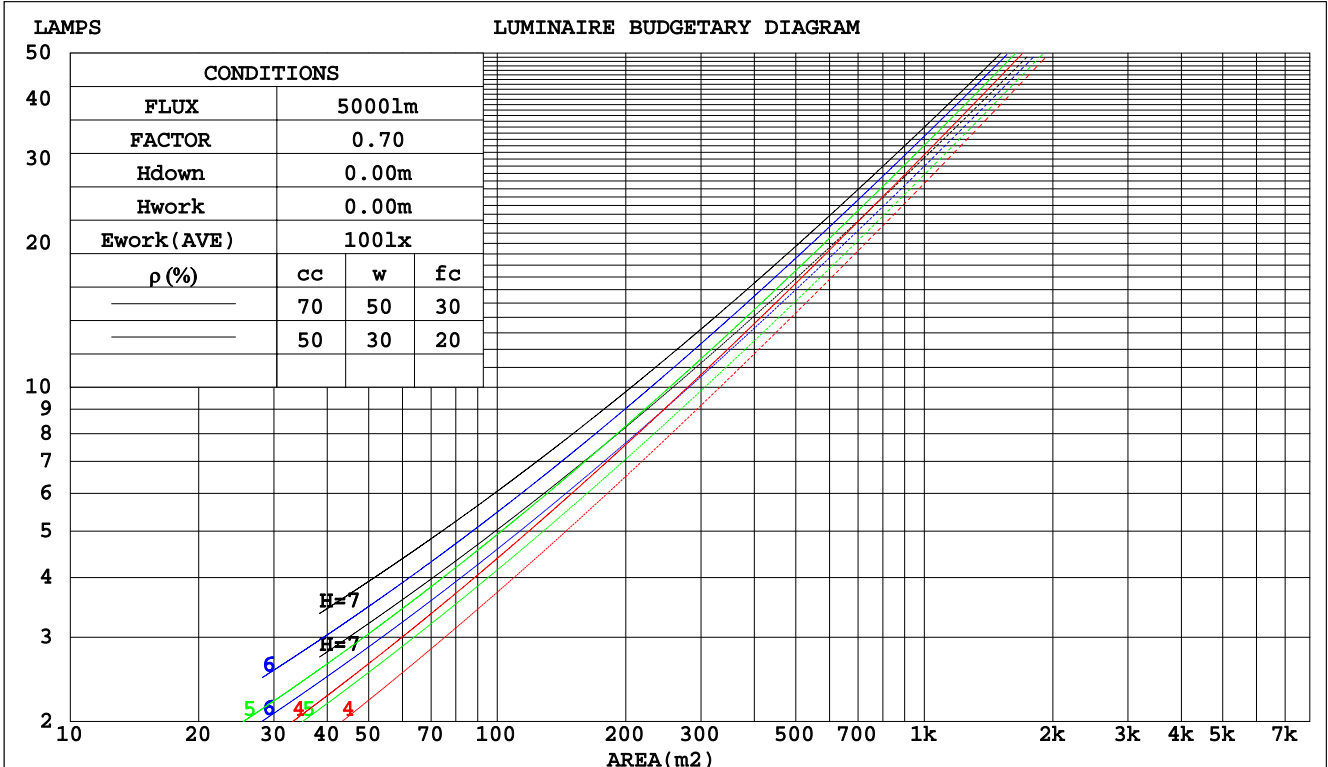
H(β) Range:-90 - 90DEG
H(β) Interval: 1.0DEG
Test Speed: HIGH
Temperature:25.3DEG
Operators:DAMIN
Test Date:2020-04-28

V(B) Range:-75 - 75DEG
V(B) Interval: 5.0DEG
Test System:EVERFINE GO-2000B_V1 SYSTEM V2.0.404.7
Humidity:65.0%
Test Distance:8.240m [K=1.0000]
Remarks: IL-P595K4NU(S)

CU AND LUMINAIRE BUDGETARY ESTIMATE DIAGRAM

Test:U:230.52V I:0.1337A P:30.115W PF:0.9768 Freq:49.99Hz Lamp Flux:3865.15x1 lm		
NAME: IL-P595K4NU(S)	TYPE:	WEIGHT:
SPEC.:	DIM.:	SERIAL No.:
MFR.: EVERFINE	SUR.:550*550	Shielding Angle:

pcc	80%			70%			50%			30%			10%			0
	50%	30%	10%	50%	30%	10%	50%	30%	10%	50%	30%	10%	50%	30%	10%	0
pw																0
pfc	20%			20%			20%			20%			20%			0
RCR	RCR:Room Cavity Ratio Coefficients of Utilization(CU)															
0.0	1.19	1.19	1.19	1.16	1.16	1.16	1.11	1.11	1.11	1.06	1.06	1.06	1.02	1.02	1.02	1.00
1.0	1.07	1.03	.00	1.04	1.01	.98	1.00	.98	.95	.96	.94	.92	.93	.91	.90	.88
2.0	.95	.89	.85	.93	.88	.84	.90	.85	.82	.87	.83	.80	.84	.81	.78	.76
3.0	.85	.78	.73	.84	.77	.72	.81	.75	.71	.78	.74	.70	.76	.72	.68	.66
4.0	.77	.69	.63	.76	.68	.63	.73	.67	.62	.71	.66	.61	.69	.64	.60	.58
5.0	.70	.62	.56	.69	.61	.55	.67	.60	.55	.65	.59	.54	.63	.58	.54	.52
6.0	.63	.55	.50	.63	.55	.49	.61	.54	.49	.59	.53	.49	.58	.52	.48	.46
7.0	.58	.50	.45	.57	.50	.44	.56	.49	.44	.54	.48	.44	.53	.48	.43	.42
8.0	.53	.46	.40	.53	.45	.40	.51	.45	.40	.50	.44	.40	.49	.44	.39	.38
9.0	.49	.42	.37	.49	.42	.37	.48	.41	.36	.47	.41	.36	.46	.40	.36	.34
10.0	.46	.38	.34	.45	.38	.33	.44	.38	.33	.43	.37	.33	.43	.37	.33	.31



H(β) Range:-90 - 90DEG
H(β) Interval: 1.0DEG
Test Speed: HIGH
Temperature:25.3DEG
Operators:DAMIN
Test Date:2020-04-28

V(B) Range:-75 - 75DEG
V(B) Interval: 5.0DEG
Test System:EVERFINE GO-2000B_V1 SYSTEM V2.0.404.7
Humidity:65.0%
Test Distance:8.240m [K=1.0000]
Remarks: IL-P595K4NU(S)

WEC AND CCEC

Test:U:230.52V I:0.1337A P:30.115W PF:0.9768 Freq:49.99Hz Lamp Flux:3865.15x1 lm		
NAME: IL-P595K4NU(S)	TYPE:	WEIGHT:
SPEC.:	DIM.:	SERIAL No.:
MFR.: EVERFINE	SUR.:550*550	Shielding Angle:

ρcc	80%			70%			50%			30%			10%			0
ρw	50%	30%	10%	50%	30%	10%	50%	30%	10%	50%	30%	10%	50%	30%	10%	0
ρfc	20%			20%			20%			20%			20%			0
RCR	RCR:Room Cavity Ratio						Wall Exitance Coefficients(WEC)									
0.0																
1.0	.256	.145	.046	.249	.142	.045	.236	.135	.043	.224	.129	.041	.213	.123	.040	
2.0	.246	.135	.041	.240	.132	.041	.229	.127	.040	.219	.123	.038	.209	.118	.037	
3.0	.232	.123	.037	.227	.121	.037	.217	.118	.036	.208	.114	.035	.199	.110	.034	
4.0	.217	.113	.033	.213	.111	.033	.204	.108	.032	.196	.105	.032	.189	.102	.031	
5.0	.204	.104	.030	.200	.103	.030	.192	.100	.029	.185	.097	.029	.178	.095	.029	
6.0	.191	.096	.027	.188	.095	.027	.181	.093	.027	.174	.091	.027	.168	.089	.026	
7.0	.180	.089	.025	.177	.088	.025	.170	.086	.025	.165	.084	.025	.159	.083	.024	
8.0	.169	.083	.023	.167	.082	.023	.161	.080	.023	.156	.079	.023	.151	.078	.023	
9.0	.160	.077	.022	.157	.077	.022	.152	.075	.021	.148	.074	.021	.143	.073	.021	
10.0	.151	.073	.020	.149	.072	.020	.145	.071	.020	.140	.070	.020	.136	.069	.020	

ρcc	80%			70%			50%			30%			10%			0
ρw	50%	30%	10%	50%	30%	10%	50%	30%	10%	50%	30%	10%	50%	30%	10%	0
ρfc	20%			20%			20%			20%			20%			0
RCR	RCR:Room Cavity Ratio						Ceiling Cavity Exitance Coefficients(CCEC)									
0.0	.190	.190	.190	.163	.163	.163	.111	.111	.111	.064	.064	.064	.020	.020	.020	
1.0	.177	.157	.139	.151	.134	.119	.103	.092	.083	.059	.054	.048	.019	.017	.016	
2.0	.166	.132	.104	.142	.114	.089	.098	.079	.062	.056	.046	.037	.018	.015	.012	
3.0	.157	.114	.080	.135	.098	.069	.093	.068	.048	.053	.040	.029	.017	.013	.009	
4.0	.149	.100	.063	.128	.087	.055	.088	.060	.039	.051	.035	.023	.016	.012	.008	
5.0	.142	.090	.051	.122	.077	.044	.084	.054	.031	.049	.032	.019	.016	.010	.006	
6.0	.135	.081	.042	.116	.070	.037	.080	.049	.026	.046	.029	.016	.015	.009	.005	
7.0	.128	.074	.036	.110	.064	.031	.076	.045	.022	.044	.026	.013	.014	.009	.004	
8.0	.122	.068	.031	.105	.059	.027	.073	.041	.019	.042	.024	.011	.014	.008	.004	
9.0	.117	.063	.027	.100	.055	.023	.070	.038	.017	.041	.023	.010	.013	.007	.003	
10.0	.111	.059	.024	.096	.051	.021	.067	.036	.015	.039	.021	.009	.013	.007	.003	

H(β) Range:-90 - 90DEG
H(β) Interval: 1.0DEG
Test Speed: HIGH
Temperature:25.3DEG
Operators:DAMIN
Test Date:2020-04-28

V(B) Range:-75 - 75DEG
V(B) Interval: 5.0DEG
Test System:EVERFINE GO-2000B_V1 SYSTEM V2.0.404.7
Humidity:65.0%
Test Distance:8.240m [K=1.0000]
Remarks: IL-P595K4NU(S)

UGR(Unified Glare Rating) Table

Test:U:230.52V I:0.1337A P:30.115W PF:0.9768 Freq:49.99Hz Lamp Flux:3865.15x1 lm										
NAME: IL-P595K4NU(S)					TYPE:			WEIGHT:		
SPEC.:					DIM.:			SERIAL No.:		
MFR.: EVERFINE					SUR.:550*550			Shielding Angle:		
ceiling/cavity	0.7	0.7	0.5	0.5	0.3	0.7	0.7	0.5	0.5	0.3
walls	0.5	0.3	0.5	0.3	0.3	0.5	0.3	0.5	0.3	0.3
working plane	0.2	0.2	0.2	0.2	0.2	0.2	0.2	0.2	0.2	0.2
Room dimensions	Viewed crosswise					Viewed endwise				
x = 2H y = 2H	15.3	16.6	15.6	16.8	17.0	16.0	17.3	16.3	17.5	17.7
3H	16.1	17.4	16.4	17.6	17.8	17.0	18.2	17.3	18.5	18.7
4H	16.7	17.9	17.0	18.1	18.3	17.4	18.6	17.7	18.8	19.1
6H	17.0	18.1	17.4	18.4	18.7	17.4	18.5	17.8	18.8	19.1
8H	17.1	18.2	17.5	18.5	18.7	17.4	18.4	17.7	18.7	19.0
12H	17.2	18.2	17.5	18.5	18.8	17.3	18.3	17.7	18.6	18.9
4H 2H	15.7	16.8	16.0	17.1	17.3	16.2	17.4	16.5	17.6	17.9
3H	16.7	17.7	17.0	18.0	18.3	17.4	18.4	17.7	18.7	19.0
4H	17.4	18.3	17.7	18.6	18.9	18.0	18.9	18.4	19.2	19.6
6H	17.8	18.6	18.2	19.0	19.3	18.1	18.9	18.5	19.2	19.6
8H	18.0	18.7	18.4	19.1	19.5	18.0	18.8	18.4	19.2	19.5
12H	18.1	18.8	18.5	19.1	19.5	18.0	18.7	18.4	19.1	19.5
8H 4H	17.6	18.3	18.0	18.7	19.1	18.2	18.9	18.6	19.3	19.7
6H	18.2	18.8	18.6	19.2	19.6	18.3	18.9	18.7	19.3	19.7
8H	18.4	19.0	18.9	19.4	19.8	18.3	18.8	18.7	19.2	19.7
12H	18.6	19.1	19.1	19.5	20.0	18.2	18.7	18.7	19.1	19.6
12H 4H	17.6	18.3	18.0	18.6	19.0	18.2	18.9	18.6	19.2	19.6
6H	18.2	18.7	18.6	19.2	19.6	18.3	18.9	18.8	19.3	19.7
8H	18.4	18.9	18.9	19.3	19.8	18.3	18.7	18.7	19.2	19.7
Variations with the observer position at spacings:										
S = 1.0H	+ 0.4 / - 0.6					+ 0.6 / - 0.6				
1.5H	+ 0.4 / - 0.4					+ 0.3 / - 0.5				
2.0H	+ 0.8 / - 0.9					+ 0.7 / - 1.5				

CIE Pub.117, 3865 lm Total Lamp Luminous Flux Corrected (8log(F/F0) = 4.7)

H(β) Range:-90 - 90DEG
H(β) Interval: 1.0DEG
Test Speed: HIGH
Temperature:25.3DEG
Operators:DAMIN
Test Date:2020-04-28

V(B) Range:-75 - 75DEG
V(B) Interval: 5.0DEG
Test System:EVERFINE GO-2000B_V1 SYSTEM V2.0.404.7
Humidity:65.0%
Test Distance:8.240m [K=1.0000]
Remarks: IL-P595K4NU(S)

UTILIZATION FACTORS TABLE

Test:U:230.52V I:0.1337A P:30.115W PF:0.9768 Freq:49.99Hz Lamp Flux:3865.15x1 lm		
NAME: IL-P595K4NU(S)	TYPE:	WEIGHT:
SPEC.:	DIM.:	SERIAL No.:
MFR.: EVERFINE	SUR.:550*550	Shielding Angle:

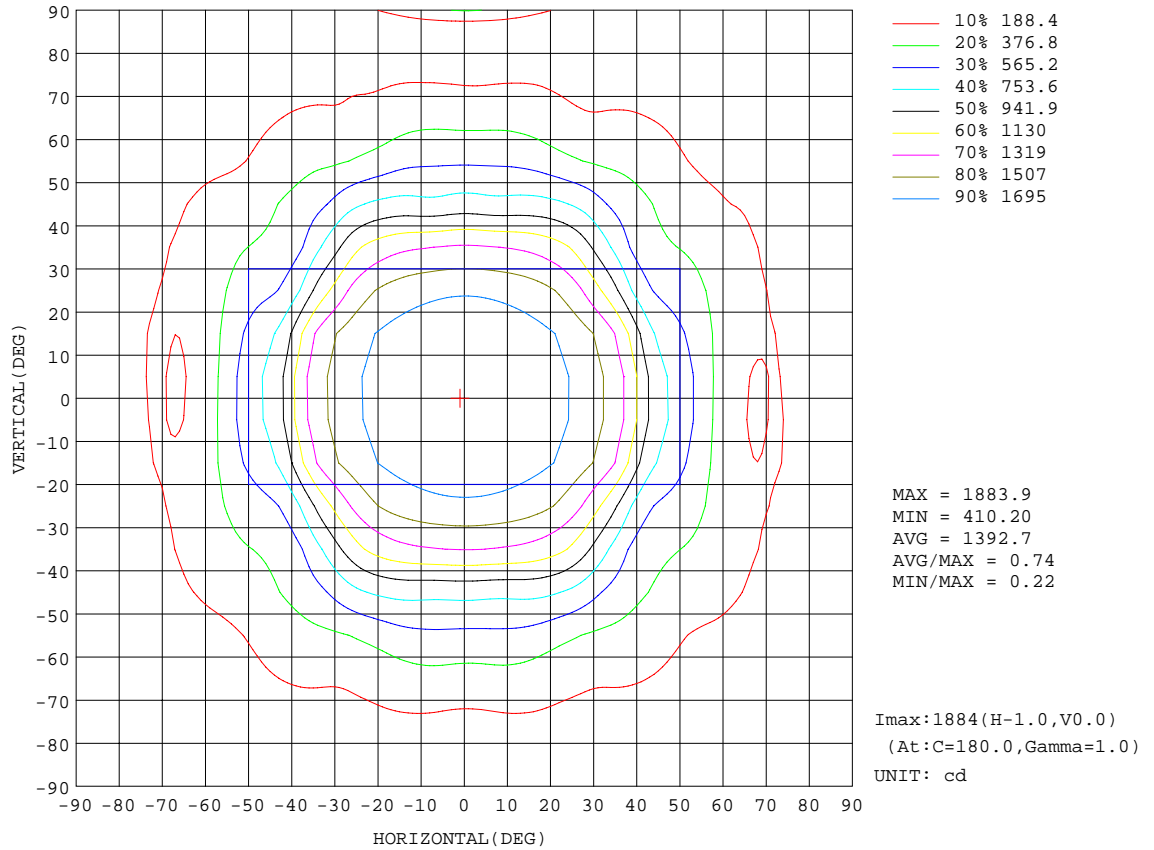
REFLECTANCE										
Ceiling	0.8	0.8	0.8	0.7	0.7	0.7	0.5	0.5	0.5	0
Walls	0.7	0.5	0.3	0.7	0.5	0.3	0.7	0.5	0.3	0
Working plane	0.2	0.2	0.2	0.2	0.2	0.2	0.2	0.2	0.2	0
ROOM INDEX	UTILIZATION FACTORS(PERCENT) $k(RI) \times RCR = 5$									
k = 0.60	67	57	51	66	56	51	65	56	50	45
0.80	76	67	60	75	66	60	74	65	60	54
1.00	84	75	69	83	74	68	81	75	68	62
1.25	90	82	76	89	81	75	87	80	75	69
1.50	95	87	81	93	86	80	90	84	79	73
2.00	100	93	88	99	92	87	95	90	86	79
2.50	103	97	92	101	96	91	98	93	89	82
3.00	106	100	96	104	99	95	100	96	93	85
4.00	109	105	101	107	103	99	103	100	97	89
5.00	111	107	104	109	105	102	104	102	99	91
ROOM INDEX	UF(total)									Direct
According to DIN EN 13032-2 2004			Suspended				SHRNOM = 1.25			

H(β) Range:-90 - 90DEG
H(β) Interval: 1.0DEG
Test Speed: HIGH
Temperature:25.3DEG
Operators:DAMIN
Test Date:2020-04-28

V(B) Range:-75 - 75DEG
V(B) Interval: 5.0DEG
Test System:EVERFINE GO-2000B_V1 SYSTEM V2.0.404.7
Humidity:65.0%
Test Distance:8.240m [K=1.0000]
Remarks: IL-P595K4NU(S)

ISOCANDELA DIAGRAM

Test:U:230.52V I:0.1337A P:30.115W PF:0.9768 Freq:49.99Hz Lamp Flux:3865.15x1 lm		
NAME: IL-P595K4NU(S)	TYPE:	WEIGHT:
SPEC.:	DIM.:	SERIAL No.:
MFR.: EVERFINE	SUR.:550*550	Shielding Angle:



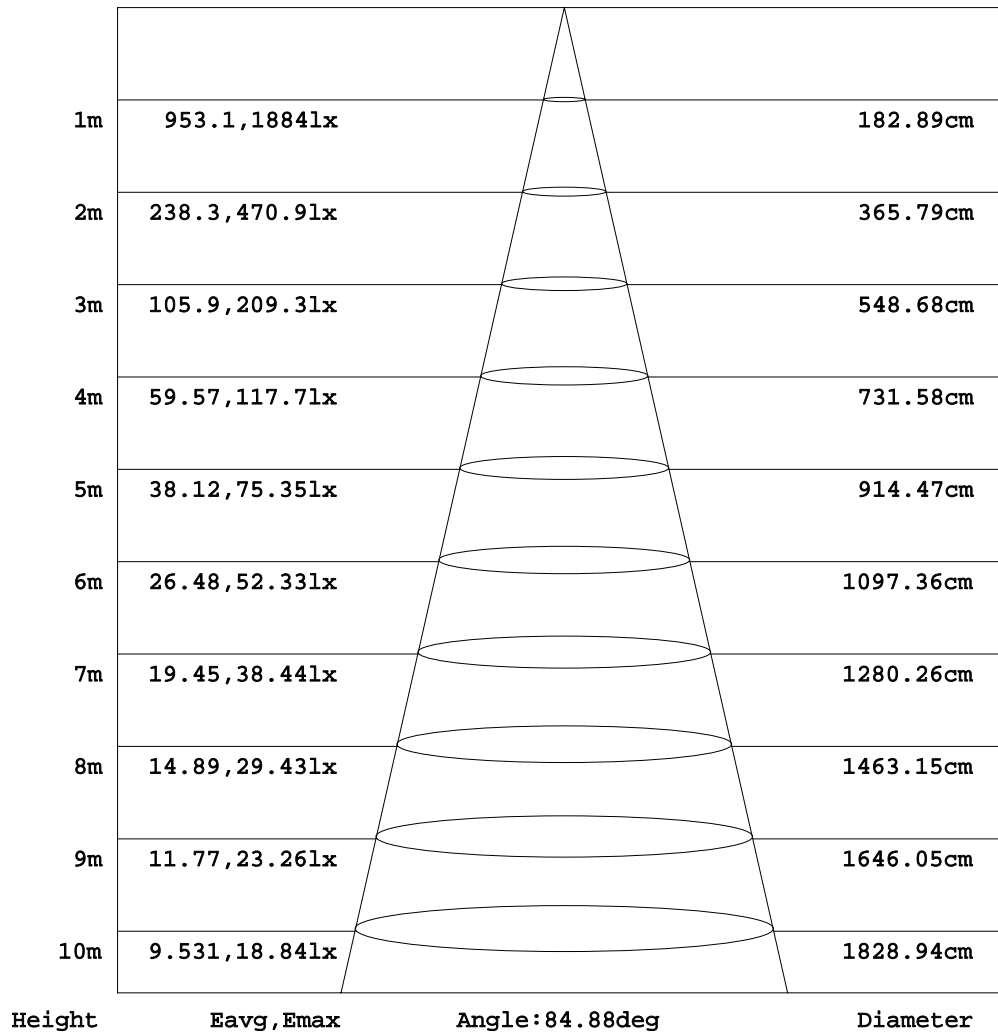
H(β) Range:-90 - 90DEG
 H(β) Interval: 1.0DEG
 Test Speed: HIGH
 Temperature:25.3DEG
 Operators:DAMIN
 Test Date:2020-04-28

V(B) Range:-75 - 75DEG
 V(B) Interval: 5.0DEG
 Test System:EVERFINE GO-2000B_V1 SYSTEM V2.0.404.7
 Humidity:65.0%
 Test Distance:8.240m [K=1.0000]
 Remarks: IL-P595K4NU(S)

AAI Figure

Test:U:230.52V I:0.1337A P:30.115W PF:0.9768 Freq:49.99Hz Lamp Flux:3865.15x1 lm		
NAME: IL-P595K4NU(S)	TYPE:	WEIGHT:
SPEC.:	DIM.:	SERIAL No.:
MFR.: EVERFINE	SUR.:550*550	Shielding Angle:

Flux out:2514 lm



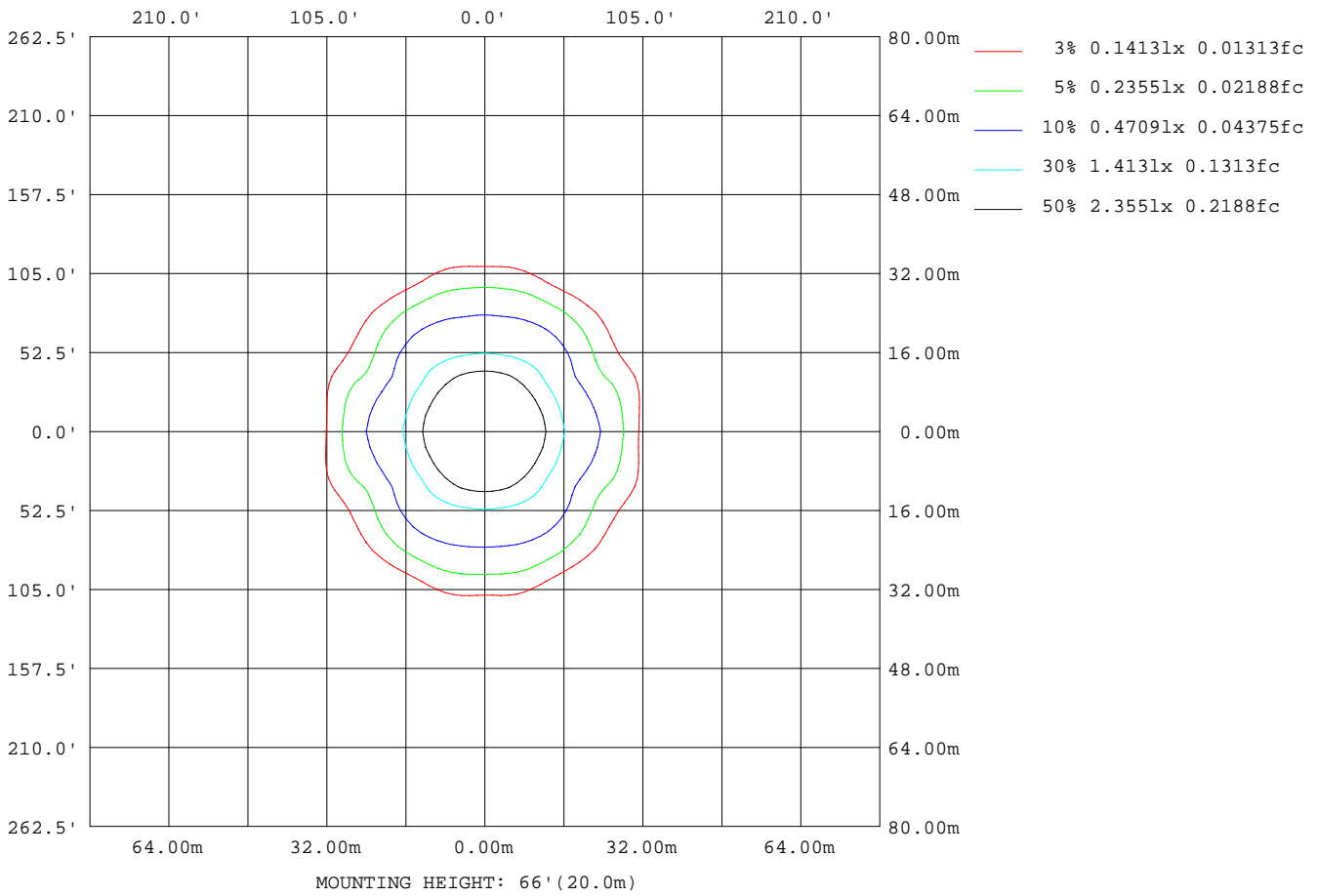
Note:The Curves indicate the illuminated area and the average illumination when the luminaire is at different distance.

H(β) Range:-90 - 90DEG
H(β) Interval: 1.0DEG
Test Speed: HIGH
Temperature:25.3DEG
Operators:DAMIN
Test Date:2020-04-28

V(B) Range:-75 - 75DEG
V(B) Interval: 5.0DEG
Test System:EVERFINE GO-2000B_V1 SYSTEM V2.0.404.7
Humidity:65.0%
Test Distance:8.240m [K=1.0000]
Remarks: IL-P595K4NU(S)

ISOLUX DIAGRAM

Test:U:230.52V I:0.1337A P:30.115W PF:0.9768 Freq:49.99Hz Lamp Flux:3865.15x1 lm		
NAME: IL-P595K4NU(S)	TYPE:	WEIGHT:
SPEC.:	DIM.:	SERIAL No.:
MFR.: EVERFINE	SUR.:550*550	Shielding Angle:



H(β) Range:-90 - 90DEG
H(β) Interval: 1.0DEG
Test Speed: HIGH
Temperature:25.3DEG
Operators:DAMIN
Test Date:2020-04-28

V(B) Range:-75 - 75DEG
V(B) Interval: 5.0DEG
Test System:EVERFINE GO-2000B_V1 SYSTEM V2.0.404.7
Humidity:65.0%
Test Distance:8.240m [K=1.0000]
Remarks: IL-P595K4NU(S)

LED Avg.L Report

Test:U:230.52V I:0.1337A P:30.115W PF:0.9768 Freq:49.99Hz Lamp Flux:3865.15x1 lm		
NAME: IL-P595K4NU(S)	TYPE:	WEIGHT:
SPEC.:	DIM.:	SERIAL No.:
MFR.: EVERFINE	SUR.:550*550	Shielding Angle:

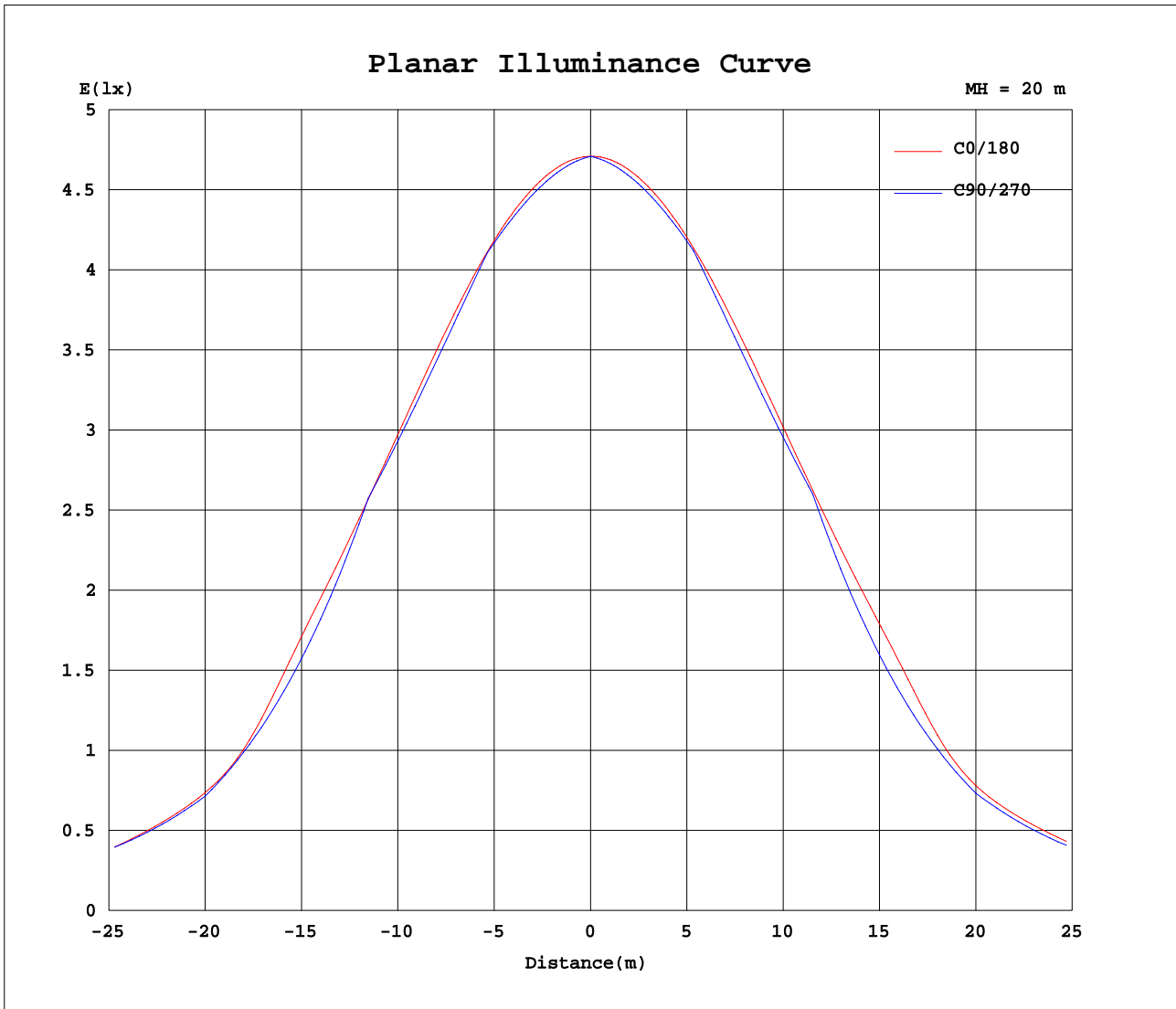
AvgL	cd/m2
L_0~180(65)av	1440
L_0~180(75)av	2269
L_0~180(85)av	1506
L_90~270(65)av	2381
L_90~270(75)av	1852
L_90~270(85)av	0
L_45(65)av	2232
L_45(75)av	1919
L_45(85)av	0

Standard: GB/T 29293-2012

H(β) Range:-90 - 90DEG
H(β) Interval: 1.0DEG
Test Speed: HIGH
Temperature:25.3DEG
Operators:DAMIN
Test Date:2020-04-28

V(B) Range:-75 - 75DEG
V(B) Interval: 5.0DEG
Test System:EVERFINE GO-2000B_V1 SYSTEM V2.0.404.7
Humidity:65.0%
Test Distance:8.240m [K=1.0000]
Remarks: IL-P595K4NU(S)

Planar Illuminance Curve



H(β) Range:-90 - 90DEG
H(β) Interval: 1.0DEG
Test Speed: HIGH
Temperature:25.3DEG
Operators:DAMIN
Test Date:2020-04-28

V(B) Range:-75 - 75DEG
V(B) Interval: 5.0DEG
Test System:EVERFINE GO-2000B_V1 SYSTEM V2.0.404.7
Humidity:65.0%
Test Distance:8.240m [K=1.0000]
Remarks: IL-P595K4NU(S)

LUMINOUS DISTRIBUTION INTENSITY DATA

Test:U:230.52V I:0.1337A P:30.115W PF:0.9768 Freq:49.99Hz Lamp Flux:3865.15x1 lm		
NAME: IL-P595K4NU(S)	TYPE:	WEIGHT:
SPEC.:	DIM.:	SERIAL No.:
MFR.: EVERFINE	SUR.:550*550	Shielding Angle:

Table--1

UNIT: cd

C(DEG) γ (DEG)	0	5	10	15	20	25	30	35	40	45	50	55	60	65	70	75	80	85	90
0	1884	1884	1884	1884	1884	1884	1884	1884	1884	1884	1884	1884	1884	1884	1884	1884	1884	1884	1884
5	1876	1875	1873	1872	1871	1869	1868	1868	1867	1866	1866	1865	1865	1864	1864	1864	1864	1863	1863
10	1857	1855	1852	1850	1848	1847	1846	1844	1842	1841	1841	1840	1840	1840	1841	1841	1842	1842	1843
15	1825	1821	1819	1817	1815	1811	1808	1806	1806	1807	1810	1812	1814	1817	1818	1820	1821	1822	1822
20	1772	1768	1766	1764	1758	1754	1753	1759	1766	1772	1769	1760	1753	1748	1745	1743	1742	1742	1743
25	1692	1689	1689	1679	1671	1676	1689	1703	1685	1672	1664	1662	1662	1663	1663	1664	1664	1664	1664
30	1580	1578	1575	1557	1560	1582	1576	1550	1541	1550	1558	1563	1565	1568	1572	1576	1580	1583	1584
35	1421	1420	1399	1378	1419	1402	1348	1349	1377	1394	1410	1426	1414	1395	1372	1352	1337	1328	1326
40	1129	1143	1088	1102	1139	1069	1078	1090	1091	1136	1186	1200	1182	1156	1126	1096	1075	1066	1067
45	834	838	783	810	751	738	741	718	813	894	925	937	935	917	885	845	817	809	808
50	673	670	640	627	571	524	478	537	594	630	682	717	719	711	700	685	670	664	664
55	460	477	488	467	464	418	409	411	444	486	502	512	522	529	541	543	535	524	520
60	264	282	321	355	358	351	334	348	353	361	366	358	347	344	364	389	398	386	376
65	180	194	220	264	275	263	256	254	274	281	267	229	218	234	272	307	316	304	298
70	188	191	202	211	207	197	181	173	188	209	208	194	191	198	214	234	239	228	220
75	168	166	154	149	148	148	130	125	139	147	151	155	164	167	166	168	161	147	142
80	96.5	86.5	79.3	82.5	85.2	93.3	90.7	94.7	97.7	81.3	67.1	56.3	45.9	32.2	19.9	11.2	4.78	1.10	0.00
85	32.0	36.8	35.0	35.8	39.0	18.6	0.00	0.00	0.00	0.00	0.00	0.00	0.00	0.00	0.00	0.00	0.00	0.00	0.00
90	1.47	0.00	0.00	0.00	0.00	0.00	0.00	0.00	0.00	0.00	0.00	0.00	0.00	0.00	0.00	0.00	0.00	0.00	0.00

H(β) Range:-90 - 90DEG
H(β) Interval: 1.0DEG
Test Speed: HIGH
Temperature:25.3DEG
Operators:DAMIN
Test Date:2020-04-28

V(B) Range:-75 - 75DEG
V(B) Interval: 5.0DEG
Test System:EVERFINE GO-2000B_V1 SYSTEM V2.0.404.7
Humidity:65.0%
Test Distance:8.240m [K=1.0000]
Remarks: IL-P595K4NU(S)

LUMINOUS DISTRIBUTION INTENSITY DATA

Test:U:230.52V I:0.1337A P:30.115W PF:0.9768 Freq:49.99Hz Lamp Flux:3865.15x1 lm		
NAME: IL-P595K4NU(S)	TYPE:	WEIGHT:
SPEC.:	DIM.:	SERIAL No.:
MFR.: EVERFINE	SUR.:550*550	Shielding Angle:

Table--2

UNIT: cd

C(DEG) γ (DEG)	95	100	105	110	115	120	125	130	135	140	145	150	155	160	165	170	175	180	185
0	1884	1884	1884	1884	1884	1884	1884	1884	1884	1884	1884	1884	1884	1884	1884	1884	1884	1884	1884
5	1863	1863	1863	1864	1864	1864	1865	1865	1866	1867	1868	1869	1870	1872	1874	1875	1877	1879	1877
10	1843	1843	1843	1843	1843	1843	1843	1842	1842	1843	1843	1843	1846	1848	1851	1855	1859	1863	1859
15	1822	1821	1820	1819	1817	1816	1815	1814	1814	1814	1813	1812	1811	1811	1814	1820	1827	1835	1828
20	1744	1745	1747	1750	1753	1757	1762	1768	1770	1767	1766	1766	1763	1759	1757	1764	1775	1788	1776
25	1663	1663	1663	1663	1664	1667	1672	1677	1681	1686	1693	1690	1690	1688	1681	1679	1696	1716	1697
30	1585	1584	1582	1578	1572	1565	1556	1553	1556	1564	1566	1572	1577	1580	1576	1565	1582	1614	1585
35	1328	1336	1353	1376	1401	1428	1448	1422	1386	1356	1363	1386	1402	1414	1426	1404	1413	1469	1418
40	1070	1080	1102	1131	1159	1179	1190	1193	1179	1124	1073	1090	1133	1121	1131	1133	1115	1222	1119
45	810	823	855	894	927	954	965	935	873	834	792	739	753	786	784	824	808	883	813
50	668	676	692	709	718	725	725	711	680	607	530	499	517	575	622	659	667	726	671
55	529	539	542	539	534	540	540	516	485	463	431	404	418	460	507	502	496	530	489
60	387	401	394	370	345	345	359	376	381	367	346	341	346	373	359	337	315	305	305
65	309	316	301	268	233	216	224	267	286	280	268	250	256	268	281	246	214	188	202
70	227	239	235	216	198	190	195	210	217	208	180	177	190	202	204	199	196	184	195
75	149	163	168	168	169	162	154	155	154	143	125	132	151	151	140	141	160	187	178
80	1.11	4.84	11.1	20.1	32.5	44.9	54.9	66.0	80.7	97.3	94.5	96.3	96.7	85.9	72.5	70.6	76.0	107	97.6
85	0.00	0.00	0.00	0.00	0.00	0.00	0.00	0.00	0.00	0.00	0.00	0.00	0.00	18.4	36.8	37.6	33.7	27.5	47.4
90	0.00	0.00	0.00	0.00	0.00	0.00	0.00	0.00	0.00	0.00	0.00	0.00	0.00	0.00	0.00	0.00	0.00	2.08	0.00

H(β) Range:-90 - 90DEG
H(β) Interval: 1.0DEG
Test Speed: HIGH
Temperature:25.3DEG
Operators:DAMIN
Test Date:2020-04-28

V(B) Range:-75 - 75DEG
V(B) Interval: 5.0DEG
Test System:EVERFINE GO-2000B_V1 SYSTEM V2.0.404.7
Humidity:65.0%
Test Distance:8.240m [K=1.0000]
Remarks: IL-P595K4NU(S)

LUMINOUS DISTRIBUTION INTENSITY DATA

Test:U:230.52V I:0.1337A P:30.115W PF:0.9768 Freq:49.99Hz Lamp Flux:3865.15x1 lm		
NAME: IL-P595K4NU(S)	TYPE:	WEIGHT:
SPEC.:	DIM.:	SERIAL No.:
MFR.: EVERFINE	SUR.:550*550	Shielding Angle:

Table--3

UNIT: cd

C(DEG) γ (DEG)	190	195	200	205	210	215	220	225	230	235	240	245	250	255	260	265	270	275	280
0	1884	1884	1884	1884	1884	1884	1884	1884	1884	1884	1884	1884	1884	1884	1884	1884	1884	1884	1884
5	1876	1874	1872	1871	1870	1869	1868	1867	1867	1866	1866	1865	1865	1865	1865	1865	1865	1865	1865
10	1856	1852	1849	1847	1845	1845	1845	1845	1845	1845	1846	1846	1846	1847	1847	1847	1846	1846	1846
15	1821	1816	1813	1813	1815	1816	1818	1818	1818	1819	1821	1822	1823	1825	1826	1827	1828	1828	1827
20	1766	1760	1763	1768	1771	1771	1773	1776	1774	1768	1764	1760	1757	1755	1754	1752	1752	1751	1751
25	1683	1686	1694	1697	1698	1702	1695	1690	1687	1681	1677	1674	1673	1674	1674	1675	1676	1676	1675
30	1571	1583	1589	1588	1585	1579	1577	1568	1565	1569	1578	1585	1591	1596	1599	1600	1600	1597	1593
35	1414	1438	1430	1417	1399	1379	1379	1407	1439	1463	1441	1414	1387	1362	1347	1343	1343	1344	1350
40	1142	1146	1140	1152	1106	1087	1138	1208	1216	1206	1191	1169	1138	1104	1087	1087	1086	1081	1087
45	831	795	793	757	739	803	845	881	952	979	964	935	898	852	820	820	829	826	829
50	669	637	585	520	498	525	610	684	716	734	733	725	714	693	677	681	683	677	681
55	491	508	467	425	408	434	464	486	515	544	543	537	544	549	544	539	538	538	543
60	320	347	375	353	347	351	371	383	380	358	345	345	373	405	412	400	392	398	401
65	233	274	267	264	255	267	277	287	273	223	215	232	269	309	324	319	310	314	319
70	203	208	209	198	178	172	199	214	214	201	194	200	217	240	244	236	228	233	239
75	162	155	156	150	129	121	139	153	158	161	173	176	170	170	164	156	148	149	161
80	94.2	91.2	92.8	98.7	98.4	99.7	101	82.6	67.7	57.3	48.4	34.5	20.4	11.3	4.84	1.16	0.00	1.11	4.77
85	47.1	46.7	43.3	20.4	0.00	0.00	0.00	0.00	0.00	0.00	0.00	0.00	0.00	0.00	0.00	0.00	0.00	0.00	0.00
90	0.00	0.00	0.00	0.00	0.00	0.00	0.00	0.00	0.00	0.00	0.00	0.00	0.00	0.00	0.00	0.00	0.00	0.00	0.00

H(β) Range:-90 - 90DEG
H(β) Interval: 1.0DEG
Test Speed: HIGH
Temperature:25.3DEG
Operators:DAMIN
Test Date:2020-04-28

V(B) Range:-75 - 75DEG
V(B) Interval: 5.0DEG
Test System:EVERFINE GO-2000B_V1 SYSTEM V2.0.404.7
Humidity:65.0%
Test Distance:8.240m [K=1.0000]
Remarks: IL-P595K4NU(S)

LUMINOUS DISTRIBUTION INTENSITY DATA

Test:U:230.52V I:0.1337A P:30.115W PF:0.9768 Freq:49.99Hz Lamp Flux:3865.15x1 lm		
NAME: IL-P595K4NU(S)	TYPE:	WEIGHT:
SPEC.:	DIM.:	SERIAL No.:
MFR.: EVERFINE	SUR.:550*550	Shielding Angle:

Table--4

UNIT: cd

C(DEG) γ (DEG)	285	290	295	300	305	310	315	320	325	330	335	340	345	350	355				
0	1884	1884	1884	1884	1884	1884	1884	1884	1884	1884	1884	1884	1884	1884	1884				
5	1866	1866	1866	1866	1867	1867	1868	1868	1869	1870	1870	1871	1872	1874	1875				
10	1845	1845	1844	1844	1844	1844	1845	1845	1847	1848	1849	1850	1851	1853	1855				
15	1826	1825	1823	1820	1818	1815	1812	1810	1810	1811	1813	1817	1818	1820	1822				
20	1752	1753	1756	1761	1767	1776	1778	1771	1763	1756	1756	1760	1766	1767	1768				
25	1674	1673	1672	1671	1670	1670	1678	1690	1707	1692	1679	1673	1681	1690	1689				
30	1588	1583	1579	1574	1572	1565	1556	1546	1554	1580	1585	1562	1559	1576	1579				
35	1364	1385	1407	1425	1434	1417	1401	1383	1353	1352	1405	1418	1376	1398	1419				
40	1110	1140	1169	1195	1212	1198	1142	1098	1100	1087	1073	1141	1108	1092	1145				
45	860	900	933	953	958	946	911	832	735	747	740	747	800	771	832				
50	696	713	726	741	746	713	653	615	545	478	519	558	610	628	664				
55	548	546	536	534	534	525	510	462	419	408	413	458	467	492	481				
60	387	361	340	346	364	375	376	367	353	327	344	356	360	336	293				
65	305	268	226	208	222	268	288	281	255	245	246	267	273	235	206				
70	233	213	194	186	191	207	212	198	180	176	183	196	211	203	193				
75	169	168	166	163	155	149	146	141	128	133	150	150	152	152	158				
80	11.2	20.1	32.1	46.4	56.6	65.1	76.2	91.6	91.2	95.7	99.1	92.2	90.0	92.7	101				
85	0.00	0.00	0.00	0.00	0.00	0.00	0.00	0.00	0.00	0.00	19.7	40.2	40.0	43.9	47.0				
90	0.00	0.00	0.00	0.00	0.00	0.00	0.00	0.00	0.00	0.00	0.00	0.00	0.00	0.00	0.00				

H(β) Range:-90 - 90DEG
H(β) Interval: 1.0DEG
Test Speed: HIGH
Temperature:25.3DEG
Operators:DAMIN
Test Date:2020-04-28

V(B) Range:-75 - 75DEG
V(B) Interval: 5.0DEG
Test System:EVERFINE GO-2000B_V1 SYSTEM V2.0.404.7
Humidity:65.0%
Test Distance:8.240m [K=1.0000]
Remarks: IL-P595K4NU(S)